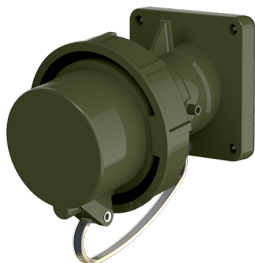


Panelmonterade intag TM

Art.nr 24210

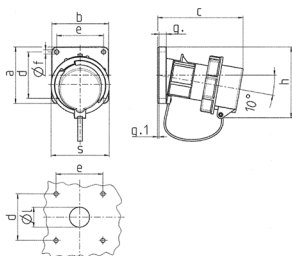


- skruvplintar
- med mycket värmebeständig kontakthållare
- nickelpläterade kontakter
- med skyddslock
- (form BP)

Tekniska data

| | |
|---------------------------|--------------|
| Ampere | 16 A |
| Poler | 3 p |
| Volt | 230 V |
| Klockposition | 6 h |
| Hertz | 50-60 Hz |
| Anslutningsteknologi | skruvkontakt |
| Kontakt | standard |
| Skyddstyp | IP67 |
| Vikt | 230 g |
| Intyg om överensstämmelse | VDE, EAC |

Mått



| Drawing | Amp. | 16 | | | 32 | | | 63 | | |
|--------------------------------------|------|-------|------|-----|-----|-----|-----|-----|-----|-----|
| | | Poles | | | 3 | 4 | 5 | 3 | 4 | 5 |
| 2 MB 62 | | | | | | | | | | |
| Dim. in mm | | a | b | c | d | e | f | g | g.1 | h |
| | | 85 | 85 | 85 | 85 | 85 | 108 | 108 | 108 | 101 |
| | | 85 | 85 | 85 | 85 | 85 | 101 | 101 | 101 | 101 |
| | | 132 | 132 | 131 | 131 | 137 | 164 | 164 | 164 | 164 |
| | | 70 | 70 | 70 | 70 | 70 | 85 | 85 | 85 | 85 |
| | | 70 | 70 | 70 | 70 | 70 | 77 | 77 | 77 | 77 |
| | | 6.3 | 6.3 | 6.3 | 6.3 | 6.3 | 6.5 | 6.5 | 6.5 | 6.5 |
| | | 11 | 11 | 11 | 11 | 11 | 12 | 12 | 12 | 12 |
| | | 2 | 2 | 2 | 2 | 2 | 2 | 2 | 2 | 2 |
| | | 100 | 107 | 108 | 108 | 111 | 130 | 130 | 130 | 130 |
| | | 70 | 87 | 94 | 94 | 102 | 114 | 114 | 114 | 114 |
| | | 30 | 30 | 30 | 30 | 30 | 40 | 40 | 40 | 40 |
| Terminal for cond. cross | | 1 | 1 | 2,5 | 2,5 | 2,5 | 6 | 6 | 6 | 6 |
| section (mm ²) min.-max. | | -2,5 | -2,5 | -6 | -6 | -6 | -16 | -16 | -16 | -16 |